

LOS ANGELES



Highlights:

Latinos represent the majority in the region, representing 48% of population (See Figure 1).

The Latino population is overwhelmingly young: 52% of the Latino population is under 30 (See Figure 1).

Unemployment in the region follows California's trend pretty closely, with a 13% unemployment rate in 2010 (See Figure 5).

1 in 11
ARE UNEMPLOYED*
***OF THE LABOR FORCE**

1 in 6
LIVE BELOW*
THE POVERTY LINE
 *excluding individuals living in group quarters

TOTAL
 LOS ANGELES RESIDENTS
9,818,605

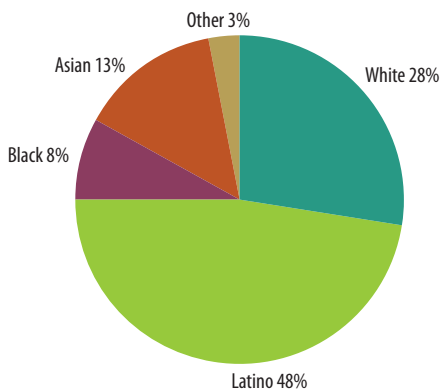
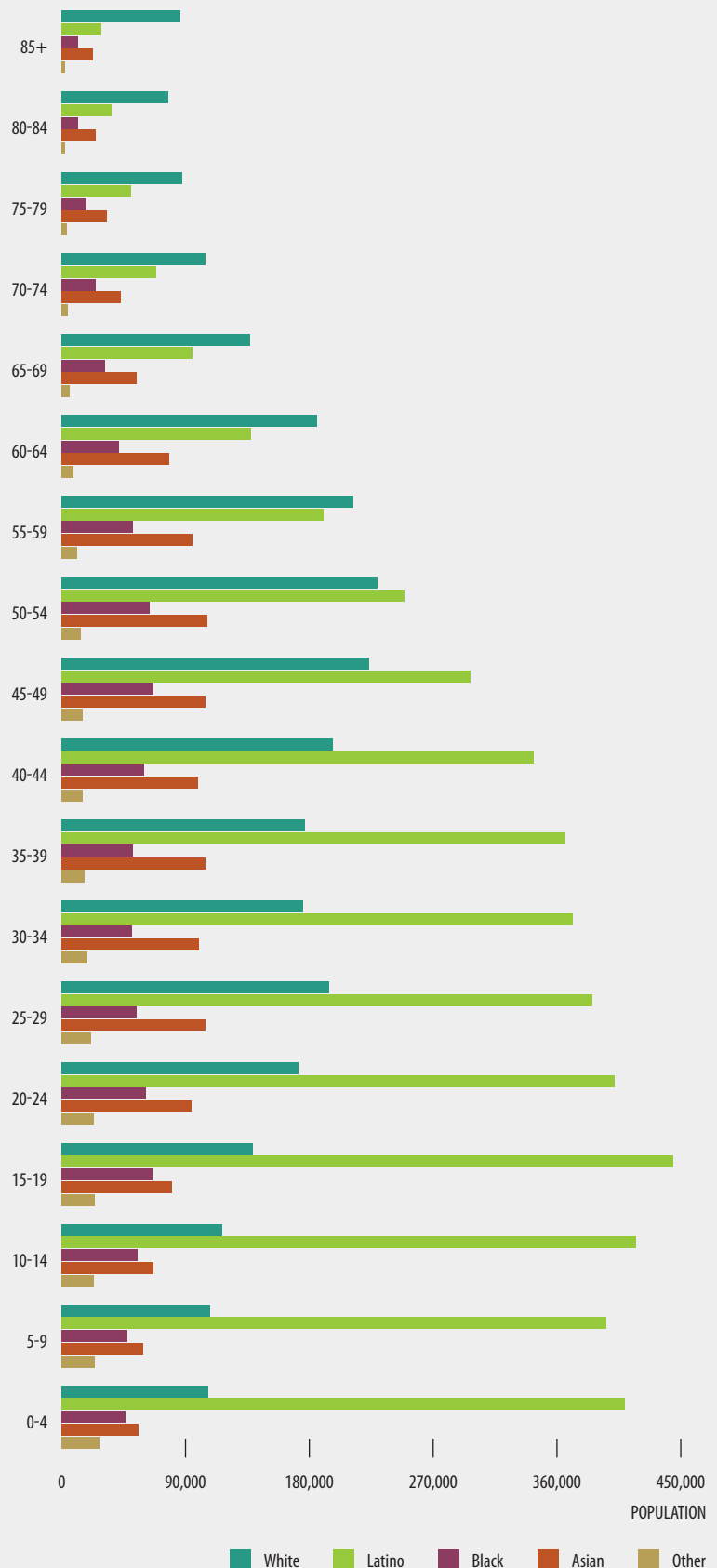
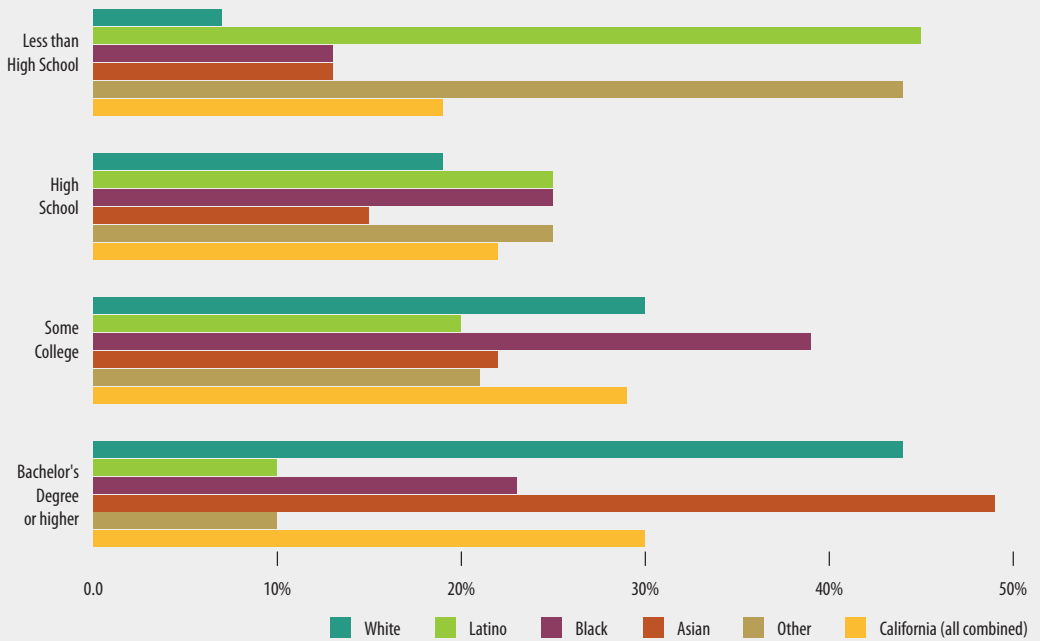


FIGURE 1 POPULATION DEMOGRAPHICS
 Number of individuals in each age category, by race



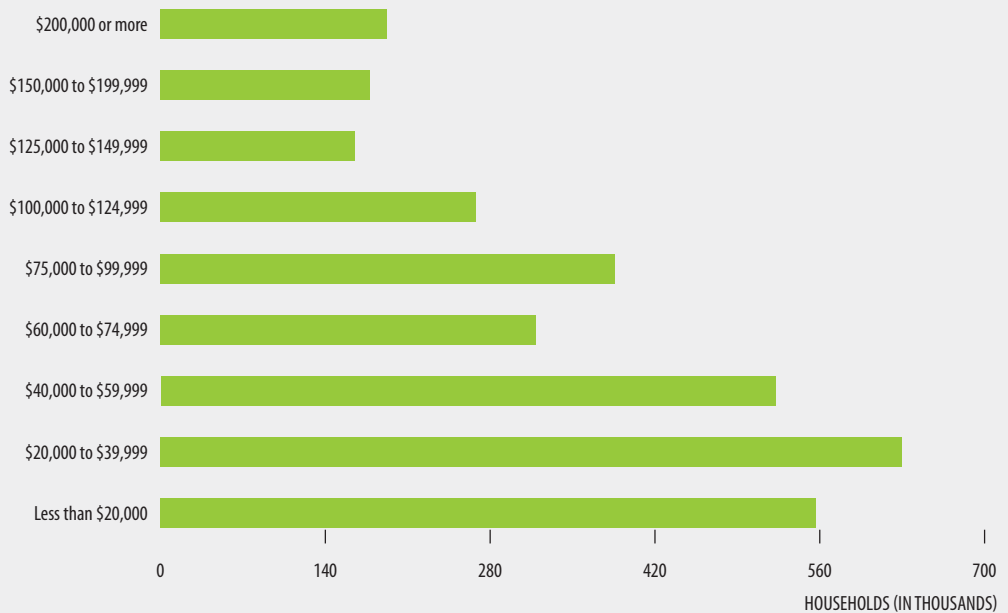
Source: 2006-2010 American Community, US Census

FIGURE 2 EDUCATIONAL ATTAINMENT BY RACE AND ETHNICITY
Percent of population 25 and older, by education category



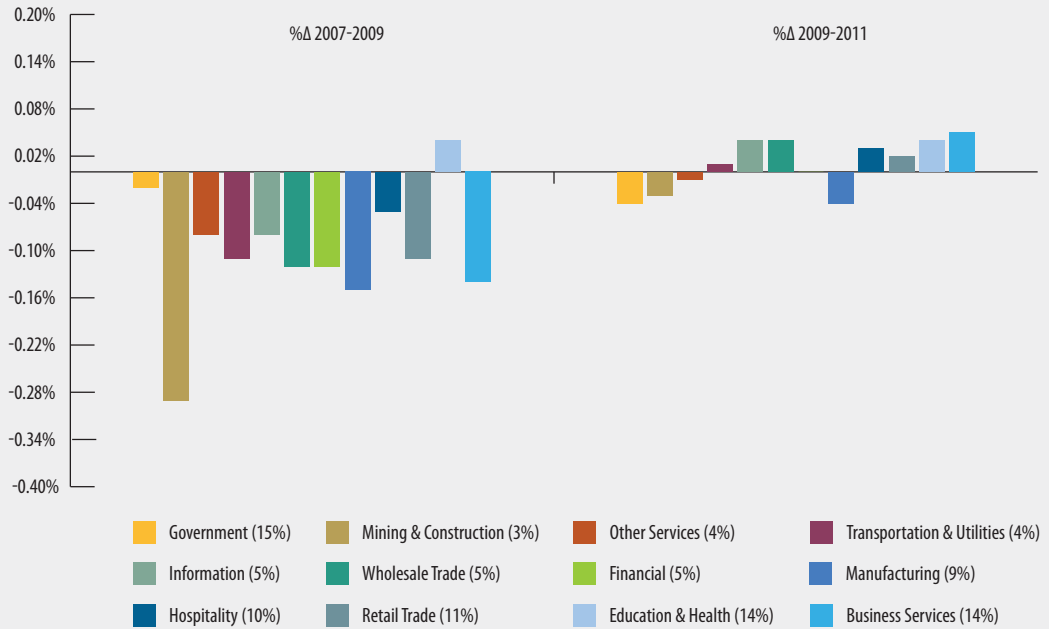
Source: 2006-2010 American Community, US Census

FIGURE 3 HOUSEHOLD INCOME DISTRIBUTION
Number of households in each income category



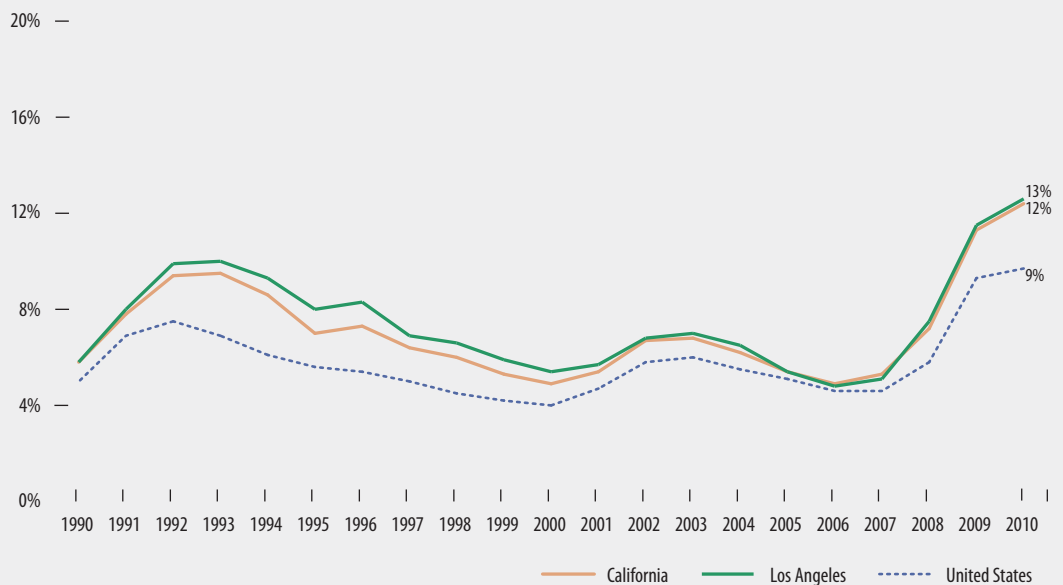
Source: 2006-2010 American Community, US Census

FIGURE 4 PERCENT CHANGE IN EMPLOYMENT BY SECTOR AND PERIOD



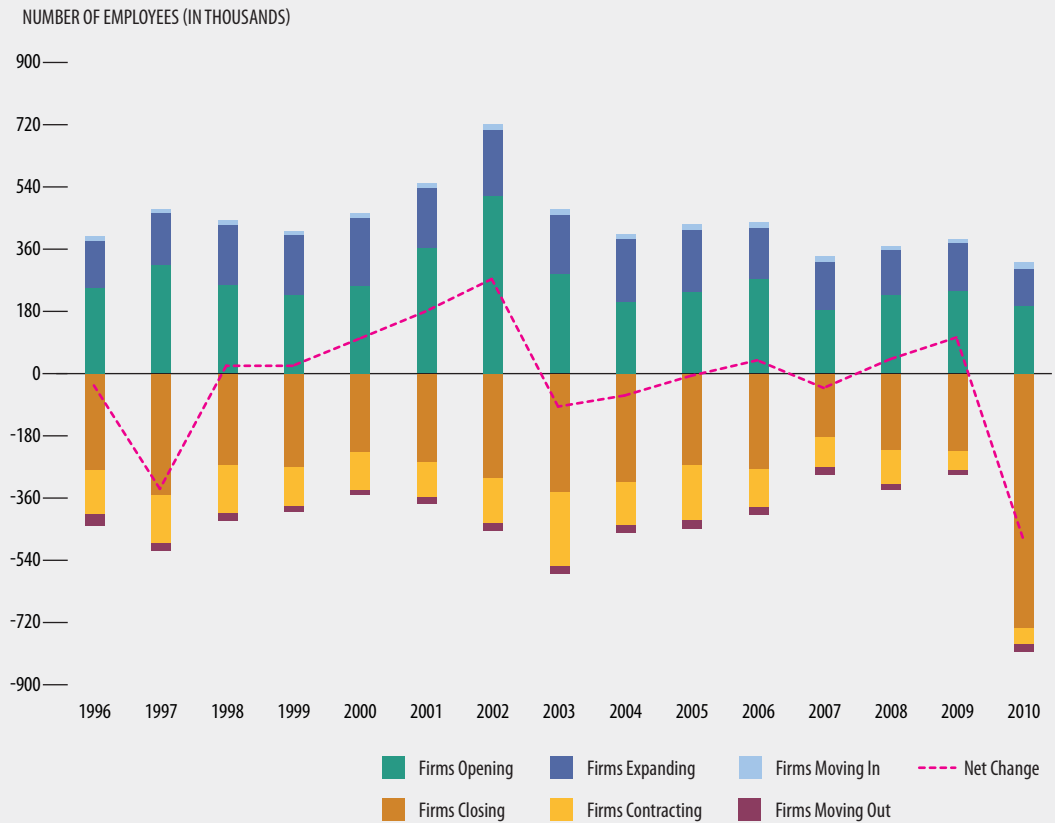
Source: Bureau of Labor Statistics, Current Employment Statistics (CES) seasonally adjusted
 Note: Number in parentheses is the sector size by employment share.

FIGURE 5 UNEMPLOYMENT RATE
 Percent of unemployed



Source: U.S. Bureau of Labor Statistics, Current Population Survey (CPS) and Local Area Unemployment Statistics (LAUS)

FIGURE 6 **JOBS GAINED AND LOST, BY SOURCE**
 Number of jobs lost or gained annually



Source: Bureau of Labor Statistics, Current Employment Statistics (CES) seasonally adjusted

HIGHLIGHTS

50% of the White population is 45 and older (See Figure 1).

In 2010, the region lost more than 730,000 jobs as a result of firms closing down. Overall 480,000 jobs were lost, nearly twice as the number of jobs lost between 1996 and 2010 combined (See Figure 6).

COUNTY

Los Angeles