

SACRAMENTO



Highlights:

Non-Latino Whites are the majority in the region, representing 54% of population (See Figure 1).

Unemployment in the region has been higher than the rest of California's since 2004, with a 14% unemployment rate in 2010 (See Figure 5).

In 2010, the region lost nearly 45,000 jobs, which is the largest decline in jobs between 1996 and 2010 (See Figure 6).

1 in 11
ARE UNEMPLOYED*
***OF THE LABOR FORCE**

1 in 8
LIVE BELOW*
THE POVERTY LINE
 *excluding individuals living in group quarters

TOTAL
 SACRAMENTO RESIDENTS
2,221,282

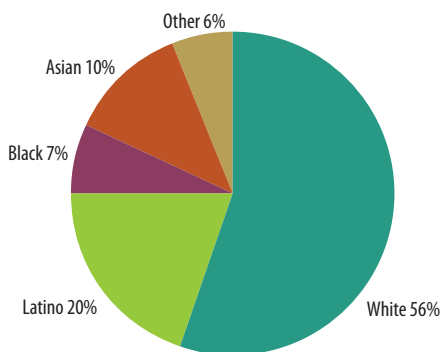
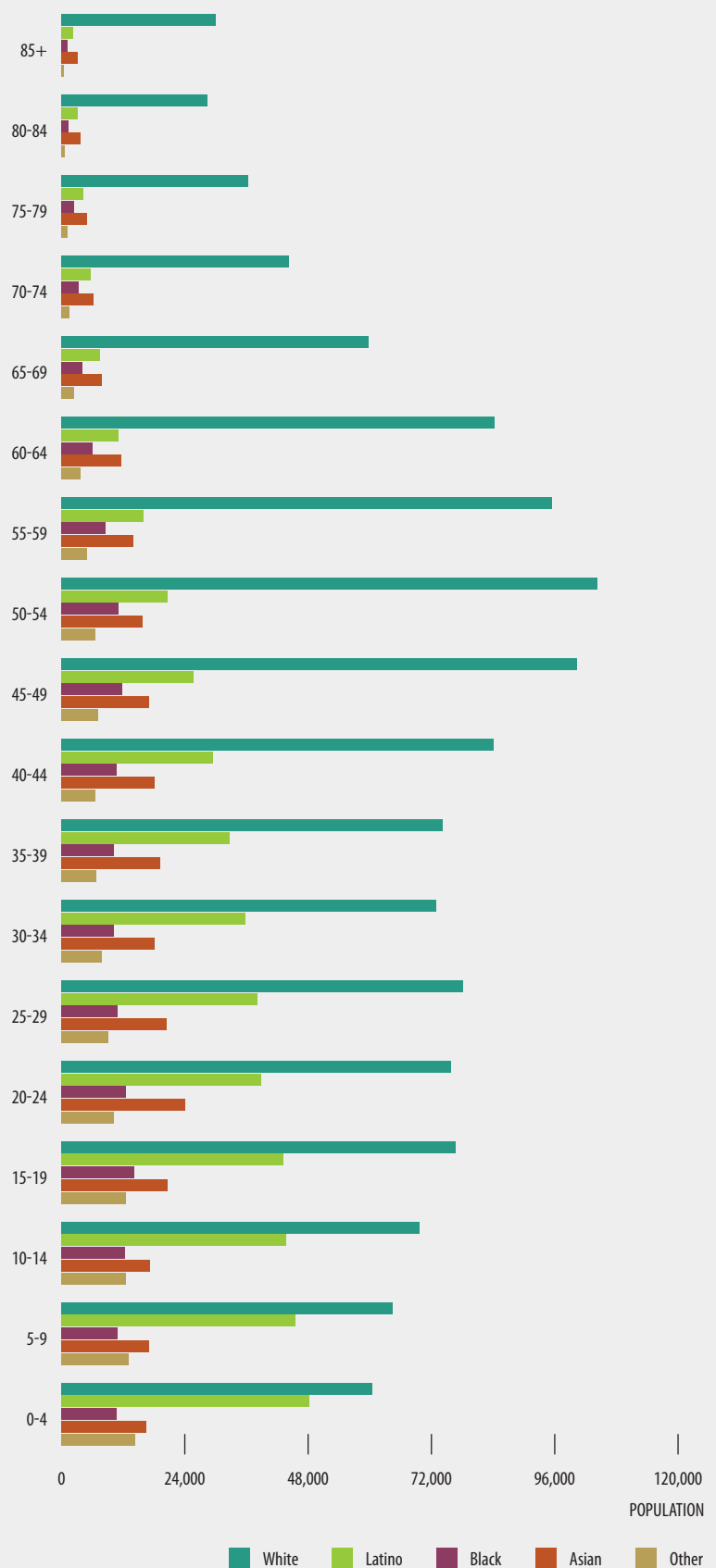


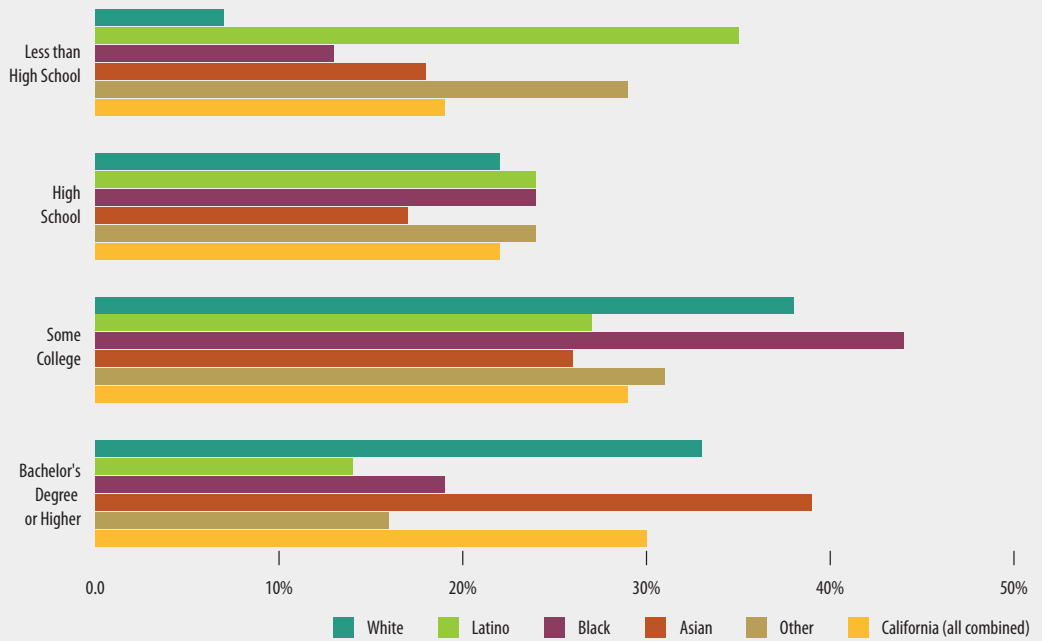
FIGURE 1 POPULATION DEMOGRAPHICS
 Number of individuals in each age category, by race



Source: 2006-2010 American Community, US Census

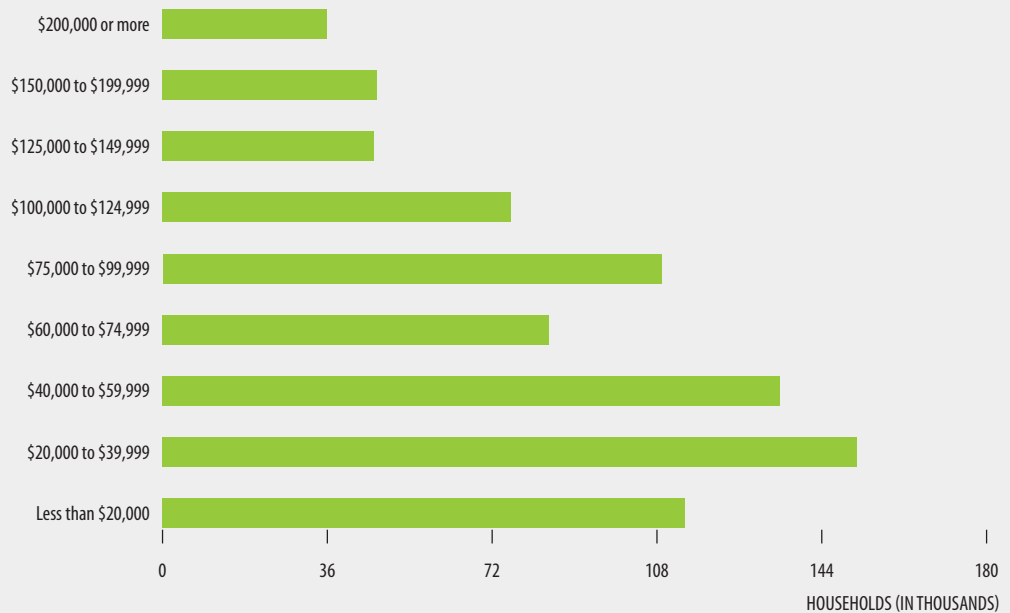


FIGURE 2 EDUCATIONAL ATTAINMENT BY RACE AND ETHNICITY
Percent of population 25 and older, by education category



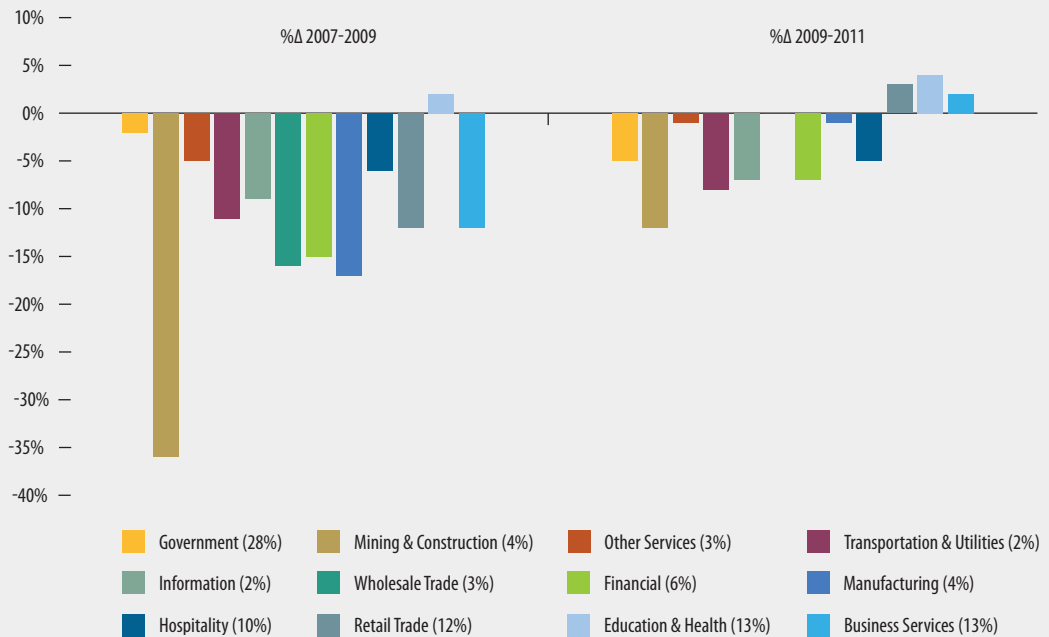
Source: 2006-2010 American Community, US Census

FIGURE 3 HOUSEHOLD INCOME DISTRIBUTION
Number of households in each income category



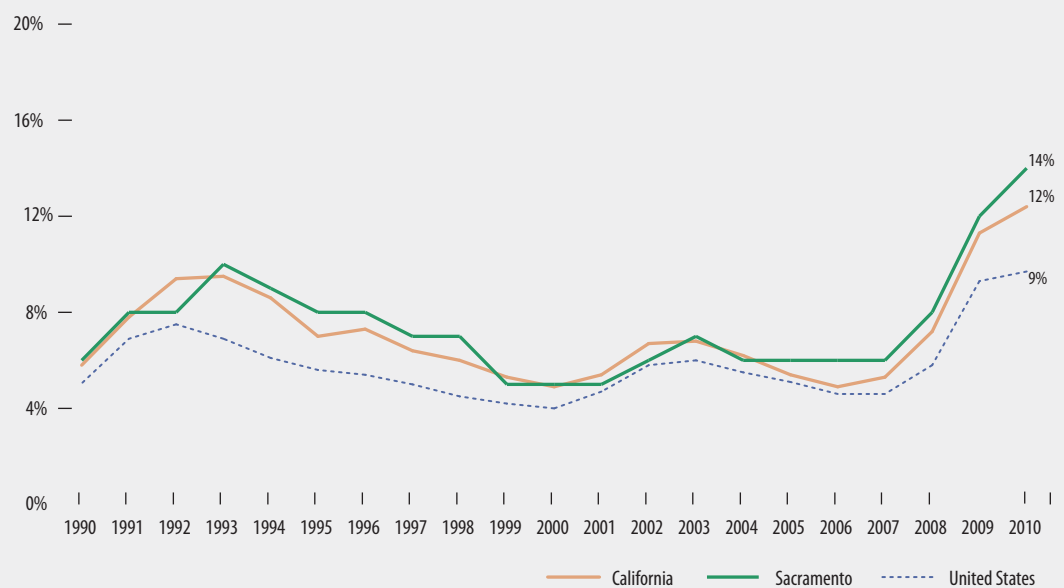
Source: 2006-2010 American Community, US Census

FIGURE 4 PERCENT CHANGE IN EMPLOYMENT BY SECTOR AND PERIOD



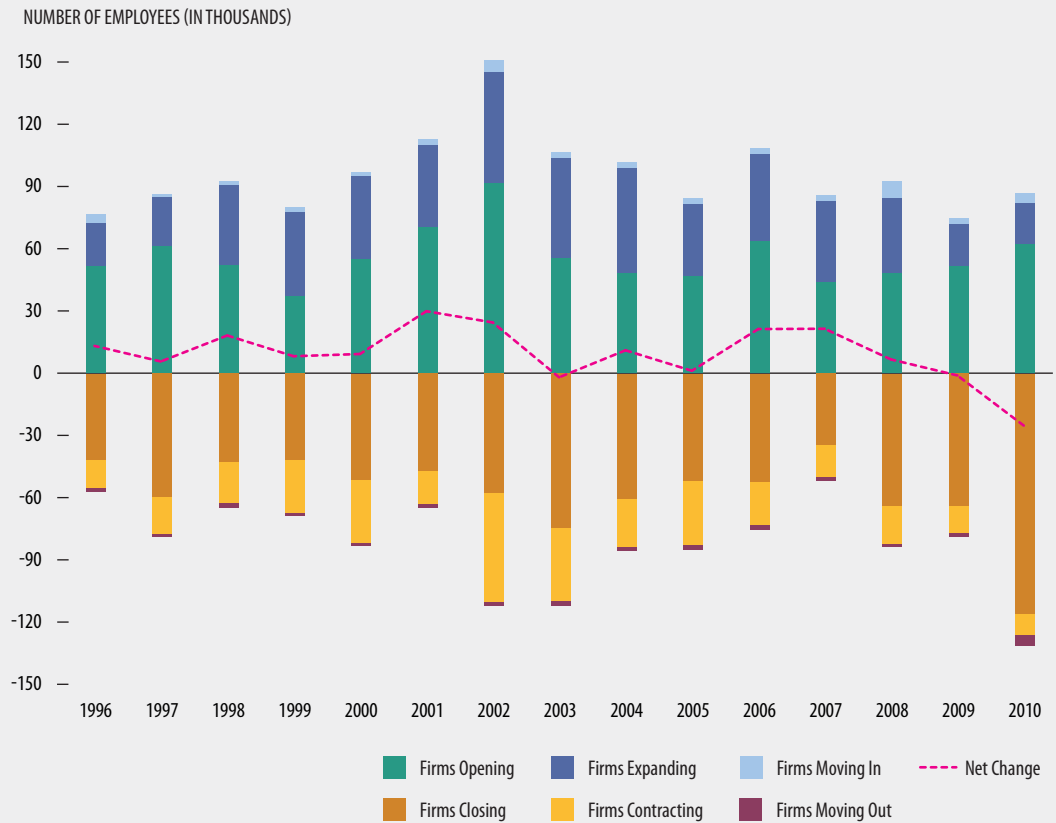
Source: Bureau of Labor Statistics, Current Employment Statistics (CES) seasonally adjusted
 Note: Number in parentheses is the sector size by employment share. Job Change By Industry Data does not include Yuba County

FIGURE 5 UNEMPLOYMENT RATE
 Percent of unemployed



Source: U.S. Bureau of Labor Statistics, Current Population Survey (CPS) and Local Area Unemployment Statistics (LAUS)

FIGURE 6 **JOBS GAINED AND LOST, BY SOURCE**
 Number of jobs lost or gained annually



Source: Bureau of Labor Statistics, Current Employment Statistics (CES) seasonally adjusted

HIGHLIGHTS

54% of the White population is 40 and older (See Figure 1).

During the 2007-2009 period nearly all employment sectors experienced declines in employment. This trend continued in the 2009-2011 period in 8 out of 12 industry sectors (See Figure 4).

COUNTIES

- El Dorado
- Placer
- Sacramento
- Yolo
- Yuba