



INLAND EMPIRE

Highlights:

Non-Latino Whites are the majority in the region, representing 49% of the population (See Figure 1).

56% of the White population is 40 and older (See Figure 1).

1 in 9
ARE UNEMPLOYED*
*** OF THE LABOR FORCE**

1 in 7
LIVE BELOW*
THE POVERTY LINE
 *excluding individuals living in group quarters

TOTAL
 INLAND EMPIRE RESIDENTS
3,224,044

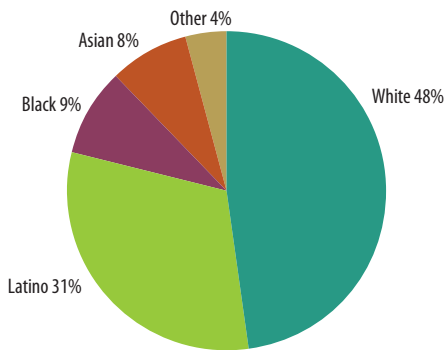
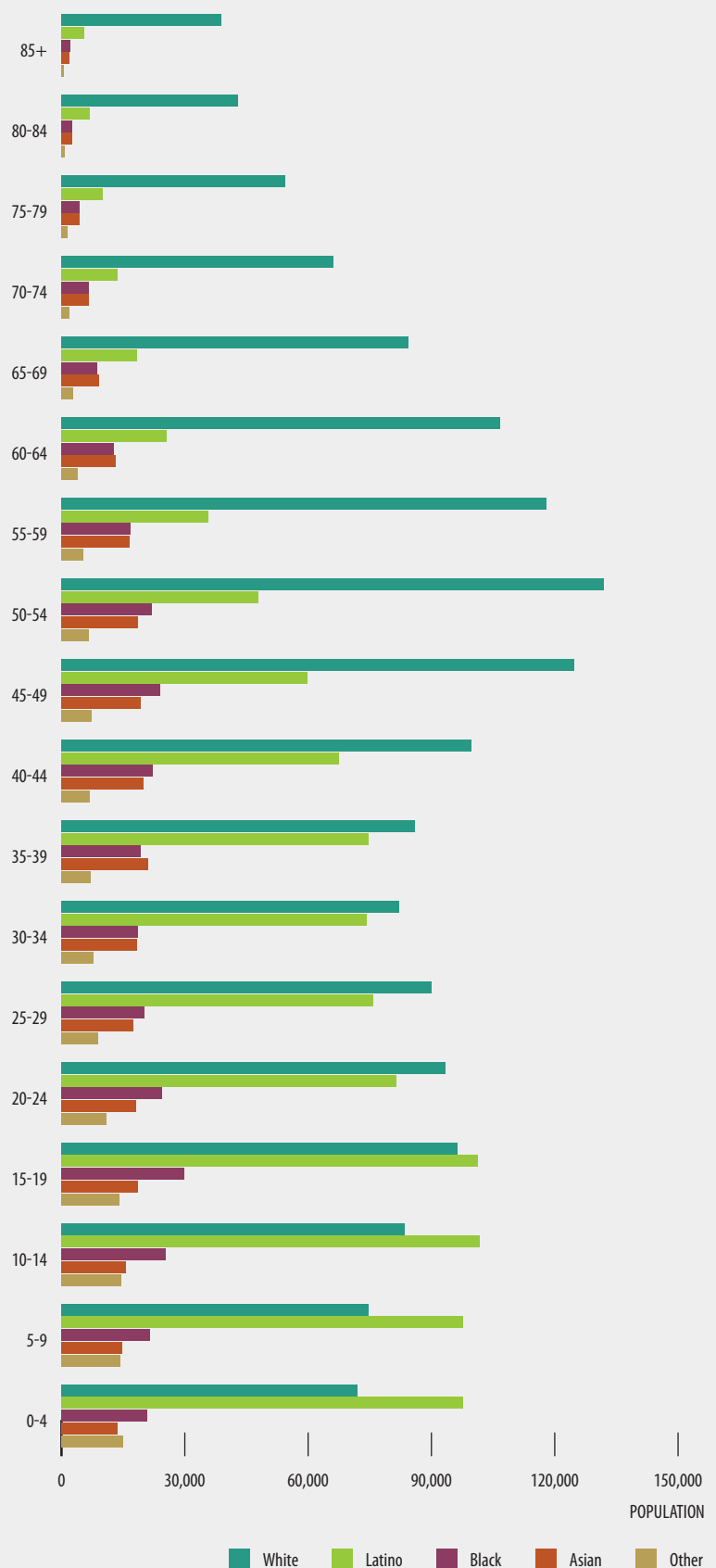


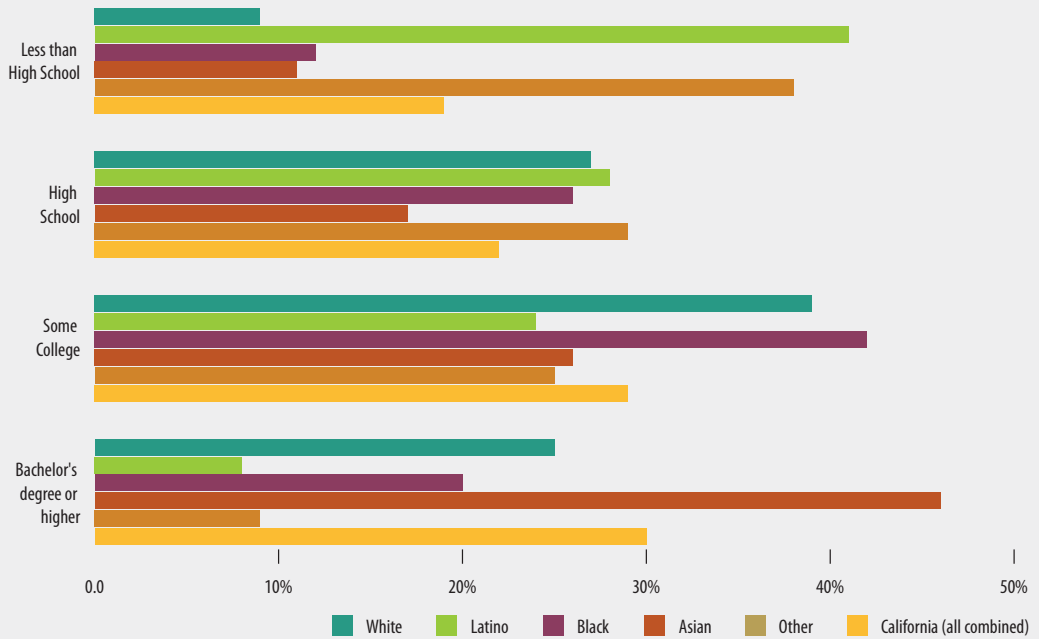
FIGURE 1 POPULATION DEMOGRAPHICS
 Number of individuals in each age category, by race



Source: 2006-2010 American Community, US Census

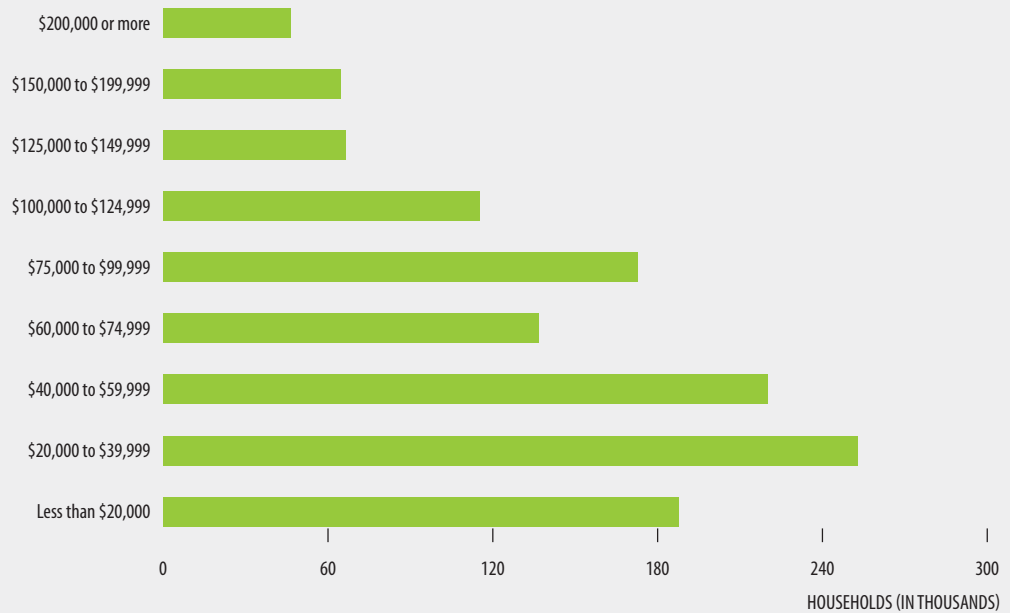


FIGURE 2 EDUCATIONAL ATTAINMENT BY RACE AND ETHNICITY
Percent of population 25 and older, by education category



Source: 2006-2010 American Community, US Census

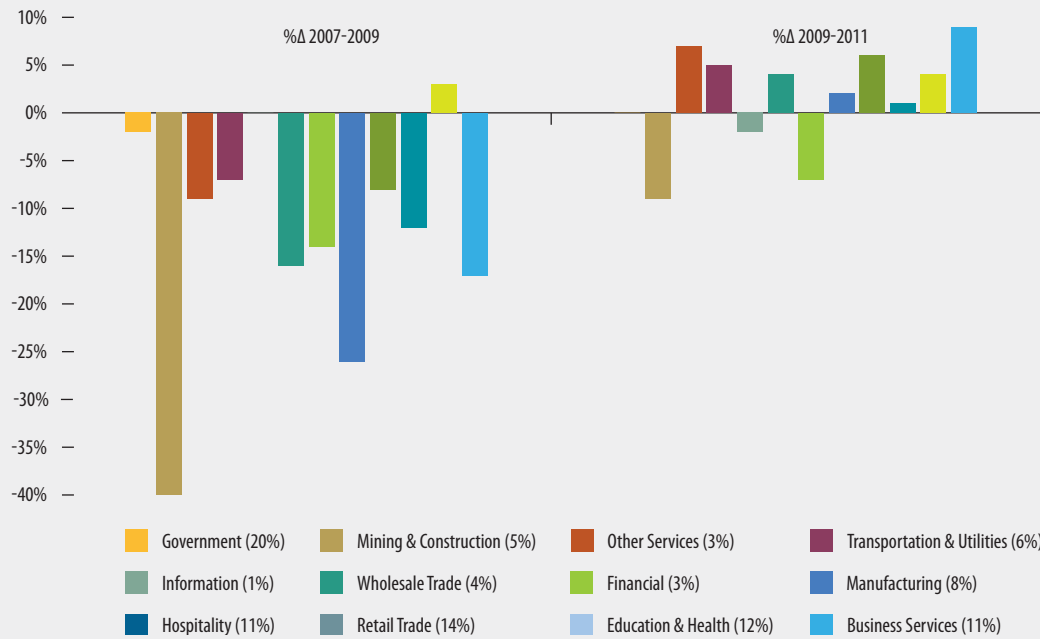
FIGURE 3 HOUSEHOLD INCOME DISTRIBUTION
Number of households in each income category



Source: 2006-2010 American Community, US Census

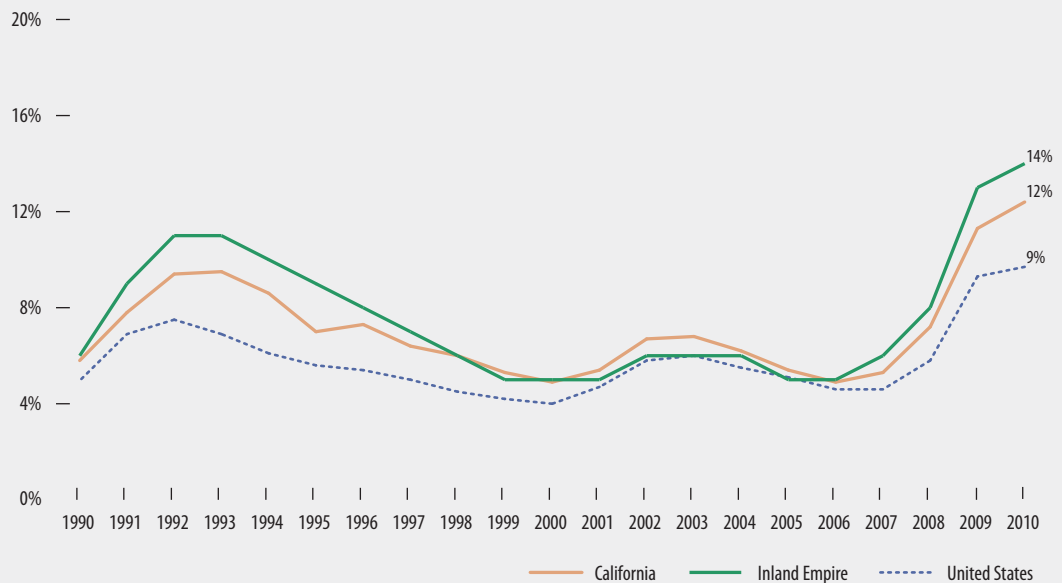


FIGURE 4 PERCENT CHANGE IN EMPLOYMENT BY SECTOR AND PERIOD



Source: Bureau of Labor Statistics, Current Employment Statistics (CES) seasonally adjusted
 Note: Number in parentheses is the sector size by employment share.

FIGURE 5 UNEMPLOYMENT RATE
 Percent of unemployed



Source: U.S. Bureau of Labor Statistics, Current Population Survey (CPS) and Local Area Unemployment Statistics (LAUS)

FIGURE 6 **JOBS GAINED AND LOST, BY SOURCE**
 Number of jobs lost or gained annually



Source: Bureau of Labor Statistics, Current Employment Statistics (CES) seasonally adjusted

HIGHLIGHTS

Mining and Construction, Manufacturing, and Business Services sectors contracted significantly during the 2007-2009 period. During the 2009-2011 period this trend continued in the Mining and Construction and Manufacturing sectors, while the Business Services sector somewhat recovered (See Figure 4).

In 2010, more than 80,000 jobs were lost in the region in 2010, for the first time in 15 years (See Figure 6).

COUNTIES

Riverside
 San Bernadino